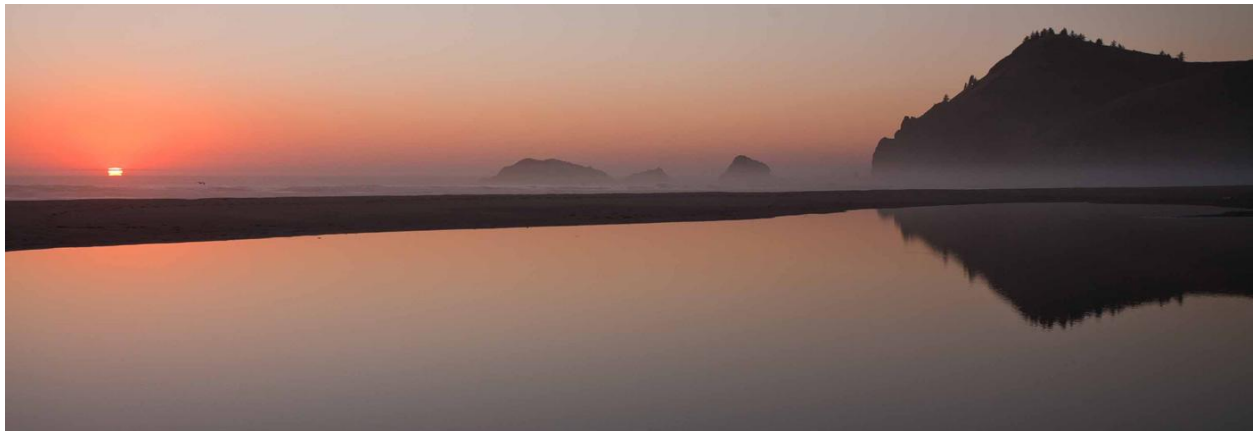

WESTWIND STEWARDSHIP GROUP

2011 STEWARDSHIP ACTIVITIES



Courtesy YWCA of Greater Portland

INTRODUCTION

2010 was an exciting year for Westwind and the Westwind Stewardship Group. Following work along our emergency access road in 2009 to install new fish passage culverts, coho salmon returned to Westwind in 2010! We launched our new Coast Guard-certified ferry the *MV Nanamuks*. We established a permanent cache of emergency supplies adequate to support a camp full of guests for several days in the wake of a devastating natural disaster. The State of Oregon recommended creation of a Marine Reserve and Marine Protected Areas off Westwind's shore. Hundreds of volunteers helped Westwind through service projects and volunteer weekends, and over 5000 children and adults visited Westwind.

WSG is poised to make even greater strides in 2011 in our efforts to protect Westwind and use the site as a platform to promote conservation, education and sustainability. We will be launching a new website and monthly newsletter. We're working to partner with local tribes to conduct a Cultural Resource Inventory of Westwind. We will develop new materials to help guests better enjoy their stay at Westwind. And we'll be assessing opportunities to relaunch food service at Westwind in 2012. In the following pages WSG invites you to learn more about our 2010 accomplishments and 2011 Stewardship Activities.



WESTWIND
STEWARDSHIP
GROUP
P.O. Box 408 • Otis, OR 97368

WESTWIND 2011 STEWARDSHIP ACTIVITIES

WSG has identified three compelling needs facing the residents of Oregon and the Northwest, in which the Westwind site and WSG have a unique and substantial role to play in finding and inspiring solutions: **Nature Deficit Disorder, Disappearing Coastal Ecosystems** and **Drawing Down Natural Capital**. Three pillars of WSG's mission— **Education, Conservation and Sustainability**—provide a roadmap for WSG's efforts to address these compelling needs.

EDUCATION

EDUCATION GOAL: *Give all visitors the opportunity to participate in educational experiences which bring together the ideas of conservation, connection to the land and sustainability.*

WSG is committed to keeping Westwind one of the premier sites for outdoor education in Oregon. We continue to seek ways to further "green" our supply stream, enhance the Westwind experience and offer our guests tools to reduce the ecological footprint of a visit to Westwind. WSG is also committed to keeping Westwind as affordable as possible for youth groups and nonprofits that make up the bulk of our guests, and will be ramping up fundraising efforts to offset operating expenses and support our stewardship activities.

In 2011 WSG will develop **materials to enhance the Westwind experience** for our guests. This includes trail maps, self-guided tours and other materials to help guest better understand and enjoy Westwind, and also tips and tools to help guests organize and successful and enjoyable event at Westwind.

As part of our **Cultural Resource Inventory**, WSG will work closely with the Siletz and Grand Ronde tribes to learn more about the cultural history of the site, and share this story with our guests. We will work with guests to convey the importance of respecting and protecting cultural artifacts, and in partnership with tribes and state agencies, reach out to the Westwind community to **foster the return of artifacts removed from Westwind** over the years to the tribes.



Doug XXX

Education priorities in 2011 include:

- Hosting a small education summit to lay the groundwork for the Educating for sustainability workshop series.
- Developing self-guided tours, trail maps and other materials to help guests better understand and enjoy Westwind.
- Providing resources to guests to help organize sustainable and enjoyable events at Westwind.



CONSERVATION

CONSERVATION GOAL: *Conserve and enhance the Westwind site's diverse biological and natural assets.*

WSG was created specifically to provide permanent protection for Westwind, and we have a number of conservation activities lined up for 2011. We will work with state and county agencies and others to educate the public about the proper use of the Salmon River Spit and discourage trespassing on Westwind by beach goers. Our Executive Director Dave Martin will continue to serve on the Board of the Salmon River Drift Creek Watershed Council, and work with them, the US Forest Service, Oregon Department of Fish and Wildlife, and others to support restoration, conservation and monitoring efforts in the lower Salmon River. And we will continue to work with guest and volunteers on service projects such as fence removal, invasive species control and trail maintenance.

In 2011 WSG will continue to partner with local tribes and state agencies to conduct a **Cultural Resources Inventory** of Westwind. The inventory will gather oral and written histories of the site and area, and study the historical use of Westwind. This year we will complete a map of known cultural sites at Westwind. We will also investigate designation of an "Area of Concern" by the State Historic Preservation Office, which will then make us eligible for specific grants and support. We will also seek partnerships with academic institutions

2010 Conservation priorities include:

- Aggressively maintaining the septic system, and working with guests to limit impacts from kitchen practices and personal care products.
- Continuing the Cultural Resources Inventory.
- Participating in local discussions around community safety and hunting.
- Supporting conservation, restoration and monitoring efforts in the lower Salmon River.
- Engaging guests and other volunteers in service projects.



Doug XXXX

SUSTAINABILITY

WSG's long-term goal is to make Westwind a model of sustainable living and self sufficiency. This includes not only headline-grabbing issues like energy independence and carbon neutrality, but also critical issues like local and sustainable food, and safety and emergency planning.

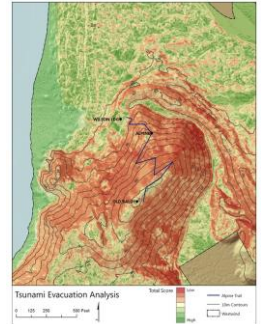
WSG's Sustainability priorities for 2010 include:

- Assessing strategies to relaunch Westwind food service in 2012.
- Completing a "shovel-ready" plan to connect our new basalt well to main camp, and exploring opportunities for capital funding to complete the project.



WESTWIND 2010 HIGHLIGHTS

In Fall 2010 Westwind was adopted by three Portland Community College students and their teacher as a **student project for a Geographic Information Systems (GIS) class**. Using publically-available data, information provided by the US Forest Service and Salmon Drift Creek Watershed Council, and their own data gathered through field work on the site, the students conducted a geographic overview and environmental analysis of the site. The students mapped and created elevation profiles for our road and trail system, assessed conservation values on the property and evaluated the threat from a tsunami. The maps and info they generated will be used to develop guest materials and support management of Westwind.



In early 2010, following major natural disasters in Haiti and Chile, WSG prioritized **establishing an emergency cache of supplies** to sustain Westwind guests in the event of a similar earthquake, tsunami or other disaster. Core supplies for the cache were acquired by early summer, and by the end of 2010 the cache was completed. Stored in a secure location outside main camp, the cache contains food, first aid supplies and shelter capable of sustaining a camp full of guests for several days. We are grateful to the Siletz Tribal Charitable Contribution Fund and an anonymous matching fund for their support in establishing the cache.



Photo: Dave Martin

In March 2010 WSG took delivery of our **new ferry the MV Nanamuks**. Construction of *Nanamuks* was first started in January 2009, but only completed in 2010 following several setbacks including the bankruptcy of the original builder. With the addition of *Nanamuks*, Westwind now has two Coast Guard-certified vessels for our crossing of the Salmon River, operated by our three Coast Guard licensed captains. Construction of *Nanamuks* was made possible by the generous contributions of numerous foundations and individuals.

Other accomplishments in 2010:

- With help from volunteers and guests, completed numerous service projects, including trail maintenance, removing invasive species, building a retaining wall and repairing the rope fence in front of Wilson Lodge.
- Developed a supplemental management plan for Westwind for the Oregon Watershed Enhancement Board.
- Met with representatives of the Siletz and Grand Ronde tribes to launch a cultural resource inventory.
- Increased signage around the property to deter trespassing and illegal hunting.



Photo: Dave Martin

BECOME A FRIEND OF WESTWIND

For generations now, people have been moved and inspired by their stay at Westwind. WSG is committed to protecting Westwind and preserving this experience. But we need your help to support our stewardship activities and keep Westwind affordable for youth groups and other nonprofits. To learn how you can help, please visit www.westwind.org or contact our Executive Director Dave Martin at 541-994-2383 or davem@westwind.org.

